



STRATFORD  
**CENTRAL**  
THE PENTHOUSES

JUST  
LAUNCHED

ONLY 3  
REMAINING

ALL FOUR LUXURY PENTHOUSES  
HAVE BEEN DESIGNED TO  
CREATE AN EASY-LIVING, STYLISH  
SANCTUARY, MAXIMISING BOTH  
SPACE AND LIGHT WITH GENEROUS  
ROOM PROPORTIONS AND THE  
BREATH-TAKING BACKDROP OF  
THE LONDON SKYLINE.

Each penthouse has a substantial living and  
entertainment space occupying the top floor,  
with bi-folding doors onto an expansive private

terrace, averaging around 600 sq. ft. These  
envious private roof terraces with outdoor  
kitchen facilities and decked seating areas, offer  
spectacular views over The Queen Elizabeth  
Park, the location of the London 2012 Olympic  
Games, as well as The O<sub>2</sub> and Canary Wharf.

Contemporary Kitchens by Urban Myth include  
fully integrated wine coolers as well as Siemens  
induction touch control hobs and ovens.  
Bathrooms feature bespoke cabinetry, mood  
lighting and are stylishly fitted with Villeroy & Boch  
sanitaryware and porcelain tiling. In addition  
to a 24hr concierge, state-of-the-art security,  
and a residents' gymnasium, residents will also  
benefit from bicycle storage, private parking,  
and underfloor heating throughout, all designed  
to complement contemporary London living.

Stratford has recently benefitted from  
investments of more than £15bn, a growth in  
population equivalent to the City of Cambridge  
(131,000 people), and an estimated 62,000 new  
jobs from the Olympics and its legacy for  
Stratford City, Canning Town and Custom  
House, the Royal Docks and Beckton.



As a result, this well-connected area has  
transformed into a new cultural quarter,  
offering the very best in shopping and  
entertainment facilities. Located in zone 2,  
Stratford is a 'gateway' to central London,  
Canary Wharf and the City, making Stratford  
station one of the best-connected transport  
hubs in the capital and one of the most  
sought-after areas for property investors.

Local amenities include Westfield Stratford  
City shopping centre, The Queen Elizabeth  
Park - which includes the Aquatics Centre  
and Copperbox Arena - as well as Roof  
East and an array of dining facilities.

PRICES START FROM £1,375,000\* FOR A TWO BEDROOM PENTHOUSE

FOR MORE INFORMATION OR TO BOOK AN APPOINTMENT PLEASE CONTACT:  
E: STRATFORD.SALES@TELFORDHOMES.LONDON E: DARREN.ASTON@TELFORDHOMES.LONDON W: WWW.STRATFORD-CENTRAL.CO.UK

For more information and prices for Stratford Central Penthouses please register at [www.stratford-central.co.uk](http://www.stratford-central.co.uk). \*Prices correct at time of going to press.

— OUR FUTURE —  
**DEVELOPMENTS**

DUE TO LAUNCH IN 2018 - REGISTER NOW FOR MORE INFORMATION

**GALLIONS POINT**  
AT ROYAL ALBERT WHARF [E8]



Gallions Point offers a stylish and contemporary mix of  
one, two and three bedroom apartments and duplexes. Fast  
becoming a distinct quarter of London, the area benefits  
from key landmarks such as the Excel Centre, Asia Business  
Park, London City Airport and the University of East  
London. The development benefits from direct links into the  
City in just 27 minutes and the DLR is a 1 minute walk away.

WWW.GALLIONS.LONDON



**NEW GARDEN QUARTER**  
STRATFORD E15



New Garden Quarter brings the quintessential landscape  
of classic garden square, private gardens and parks  
found in London's finest settings to one of the capital's  
most exciting contemporary quarters. One, two &  
three bedroom apartments and villas will benefit from  
beautifully designed living spaces.

WWW.NEWGARDENQUARTER.CO.UK

**BOW  
GARDEN  
SQUARE**  
London E7



A superb collection of suites, one, two & three  
bedroom apartments and villas in the heart of Bow.  
Inspired by the surrounding green open space of  
Mile End and Victoria Park, Bow Garden Square  
offers stylish design, high quality finish and excellent  
transport links.

WWW.BOWGARDENSQUARE.COM

TO FIND OUT MORE ABOUT OUR EXCITING FUTURE DEVELOPMENTS VISIT:

WWW.TELFORDHOMES.LONDON

COMPUTER GENERATED IMAGES ARE INDICATIVE ONLY.

**SPACE, STYLE & LUXURY**



The Brookmans Manor launch exceeded expectations  
with a steady flow of appointments across the day. The  
customer feedback received was very positive and many  
people commented on the fantastic size and layout of  
the apartments. Prospective buyers were very impressed with the  
presentation of the development and high specification, particularly  
the communal rear garden and mature landscaping to the front.  
The majority of visitors were looking to downsize from their current  
property, and several are now progressing with their decision to sell  
their property and purchase an apartment at Brookmans Manor.

CONTACT US NOW TO SEE WHAT  
BROOKMANS MANOR HAS TO OFFER:

T: 020 3538 6312 | E: [jessica.munday@telfordhomes.london](mailto:jessica.munday@telfordhomes.london)  
W: [www.brookmansmanor.co.uk](http://www.brookmansmanor.co.uk)

PRICES FROM £490,000\*

Photography of actual Show Apartment at Brookmans Manor. \*Price correct at time of going to press.

BROOKMANS MANOR SHOW APARTMENT:  
2 GEORGE'S WOOD ROAD, HATFIELD AL9 7BZ



A development by:  
**telfordhomes**

**TELFORD HOMES**  
**NEWSLETTER**

AUTUMN EDITION

**STRATOSPHERE  
PROJECT MANAGER,  
DAVE WRIGHT, WINS  
PRIDE IN THE JOB  
AWARD FOR 4<sup>TH</sup> TIME**

Dave Wright, Project Manager  
of Telford Homes' Stratosphere  
development in Stratford, has scooped a  
prestigious Pride in the Job Quality  
Award for the fourth time.

Now in their 37<sup>th</sup> year, these awards  
are some of the most highly respected  
in the housebuilding industry and  
celebrate the contribution site and  
Project Managers make to creating  
quality housing developments. The  
NHBC (National House-Building  
Council) carries out a series of spot  
check site inspections to select the  
most well organised construction  
sites that are the benchmark for UK  
housebuilding.

The award is the highest recognition  
a Project Manager can receive in the  
industry and highlights Dave's work  
ethic and dedication with his fourth  
award in seven years.

Following the announcement of Quality  
Award winners, Dave will compete to be  
given the Seal of Excellence and Regional  
Award this September.

Jon Di-Stefano, Chief Executive of  
Telford Homes said: "The Pride in the  
Job Quality Award that Dave has won  
demonstrates the dedication that we,  
as a team, have in creating some of  
the best quality homes in London.  
A Project Manager is a pivotal role in  
this success and we are delighted that  
Dave's hard work has once again been  
recognised in these highly respected  
national awards."



**TELFORD HOMES EXCELS  
IN CUSTOMER SERVICE FOR  
SECOND YEAR RUNNING**

99%

of customers  
independently  
surveyed would  
recommend us

Telford Homes has achieved 99%  
for its level of customer service for  
the second year running, becoming  
one of the highest rated developers  
in the Customer Satisfaction Survey.  
The annual survey was conducted by  
In-House, the specialist independent  
Customer Service Research Company,  
and included a variety of the UK's large  
and mid-sized house builders.

In-House is a member of the European  
Society for Opinion and Market  
Research and provide the largest  
independent benchmarking. The  
surveys focus on gathering detailed  
customer comments via telephone  
interviews and online channels.

Buyers that took part in the survey  
commented that Telford Homes  
made them feel "special" as they  
were "very proactive in getting in  
touch and pleasant to deal with".  
Comments also stated that it was  
obvious that the team are proud of  
its high-quality developments, which  
are situated across central London in  
areas such as Stratford, Bermondsey,  
and Canary Wharf.

David Campbell, Group Sales and  
Marketing Director, Telford Homes,  
comments: "We pride ourselves on  
delivering excellent and proactive  
customer service for our buyers  
and residents. All staff undergo an

extensive training programme  
to ensure they offer a seamless  
service to help our clients through  
what is likely to be one of their  
most significant purchases. To  
achieve 99% satisfaction for the  
second-year running is testament  
to our customer relations and  
Customer Service Teams' hard  
work and demonstrates the  
pride that they have in taking  
care of our clients."

For more information about  
Telford Homes please contact  
us on:  
T: 020 3538 4859 or visit:  
W: [www.telfordhomes.london](http://www.telfordhomes.london)

PAGE  
**2** SHOW APARTMENT OPENING  
at Bermondsey Works

**FUTURE  
DEVELOPMENTS**

- > GALLIONS POINT
- > NEW GARDEN QUARTER
- > BOW GARDEN SQUARE

**THE GRAND  
OPENING**  
at Manhattan Plaza

PAGE  
**3**

PAGE  
**6**





BERMONDSEY WORKS

London SE16

# FINAL PHASE LAUNCHED

# SHOW APARTMENTS NOW OPEN

STYLISH • DESIRABLE • AFFORDABLE

**AN EXCEPTIONAL COLLECTION OF THREE BEDROOM  
APARTMENTS AND DUAL LEVEL VILLAS AVAILABLE**

**LIMITED PARKING AVAILABLE AT ADDITIONAL COST**

The two contemporary show apartments were launched at Bermondsey Works on Thursday 14<sup>th</sup> September to a very positive reception. Both apartments offer a spacious 3 bedroom layout, representing the apartments launched in the final phase. The first show apartment is dressed by luxury London-based designer Rachel Winham and focuses on sharp geometric patterns, statement colours and key pieces of furniture providing a fun focal point to each room. The second show apartment is stylishly dressed by Hatch Interiors displaying the investor furniture package on offer, of interest to investors buying to rent out their property.

The Bermondsey Works development also offers an impressive 130 metre breath-taking roof top terrace, private residents' gymnasium, a 24 hour concierge to welcome you home, and an exciting social scene and transport links close by.

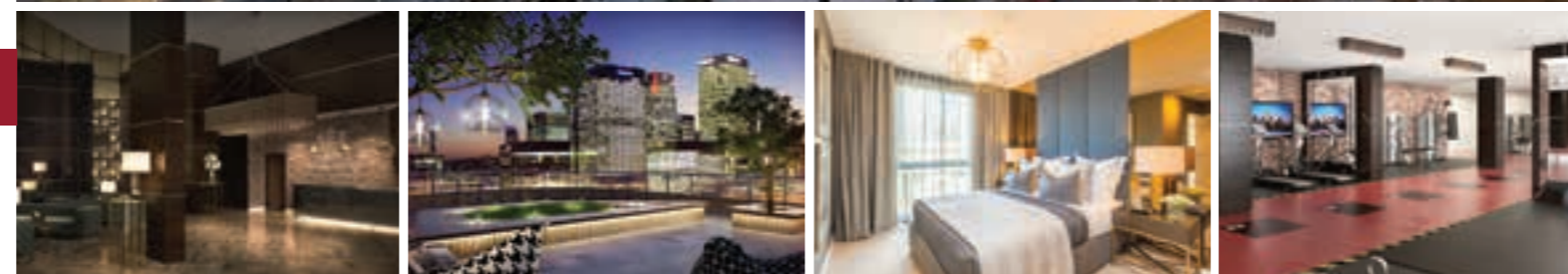
**TO BOOK AN APPOINTMENT TO VIEW THE LUXURY SHOW  
APARTMENTS, CONTACT THE SALES TEAM ON:**

**T: 020 3538 7818 | W: stratfordsales@telfordhomes.london**

**STAMP DUTY PAID IN FULL FOR A LIMITED TIME ONLY!\***

**COMPLETIONS FROM SUMMER 2017**

TELFORD HOMES SALES & MARKETING SUITE:  
GROUND FLOOR, UNEX TOWER, 11 STATION STREET, STRATFORD E15 1DA



Images of Manhattan Plaza are indicative only.



# GRAND OPENING

**21<sup>ST</sup> SEPTEMBER AT 4PM-8PM**

**STAMP DUTY PAID IN FULL FOR OWNER-OCCUPIERS AND  
INVESTORS FOR A LIMITED TIME ONLY! ENQUIRE NOW.**

**NEW SHOW HOME LAUNCH AND DEVELOPMENT  
GRAND OPENING. JOIN US FOR CHAMPAGNE &  
CANAPÉS ON 21<sup>ST</sup> SEPTEMBER AT 4PM-8PM.**

Join us for the opening of two brand new show apartments dressed by Rachel Winham and Hatch Interiors, plus gain exclusive access to the roof top terrace, the concierge and the private residents' gymnasium.

Make a reservation on the night and receive a free furniture package by Hatch Interiors if you're an investor, or the cash equivalent if you're the owner-occupier.

**STAMP DUTY PAID OFFER EXTENDED UNTIL 30<sup>TH</sup> SEPTEMBER**

**CONTACT THE SALES TEAM TO BOOK YOUR APPOINTMENT TO VIEW  
THESE FANTASTIC CONTEMPORARY APARTMENTS:**

**T: 020 3538 2199 | E: MANHATTANPLAZA@TELFORDHOMES.LONDON  
W: WWW.MANHATTANPLAZA.CO.UK**

THE  
PENTHOUSE COLLECTION  
EVENT

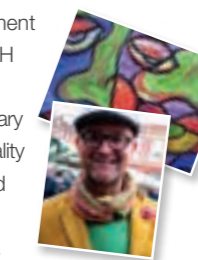
By Telford Homes

# VIP

WEDNESDAY 4<sup>TH</sup> OCTOBER | 4PM-8PM

At Horizons Penthouse Show Apartment  
Yabsley Street • London • E14 9BH

An exclusive penthouse collection event and contemporary art exhibition of renowned abstract artist and TV personality David Harper. Individual display pieces can be purchased at the event. All of this hosted against the backdrop of Telford Homes' lavish penthouses, also available for sale.



#### HORIZONS | E14

An exclusive collection of penthouses with amazing views of the London skyline. Providing the best of luxury living in a waterside development, close to the heart of Canary Wharf, these elite homes have been created for discerning individuals who demand sophistication and quality in all that they do.

**Prices from £1.425m**  
[horizons-apartments.co.uk](http://horizons-apartments.co.uk)



#### STRATFORD CENTRAL | E15

The epitome of exclusivity, the four dual level penthouses at Stratford Central will offer luxury living and status for a discerning few. Aesthetically beautiful and lavishly appointed, this is a rare opportunity to enjoy statement living in a true destination.

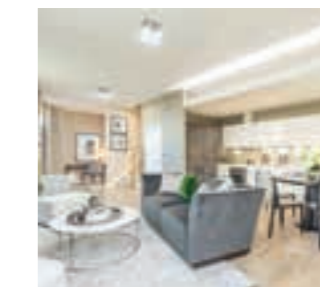
**Prices from £1.375m**  
[stratford-central.co.uk](http://stratford-central.co.uk)



#### MANHATTAN PLAZA | E14

Cosmopolitan living close to the heart of Canary Wharf, with extensive high end retail and leisure facilities merely minutes away. Manhattan Plaza offers an exclusive collection of luxury penthouses with outstanding specification and fantastic views towards The River Thames, Canary Wharf & The City.

**Prices from £1m**  
[manhattanplaza.co.uk](http://manhattanplaza.co.uk)



**FIND OUT MORE AND BOOK  
YOUR APPOINTMENT AT**

**W: TELFORDHOMES.LONDON | T: 020 3441 3078**

